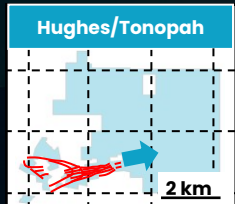
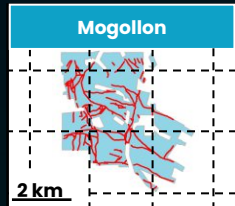
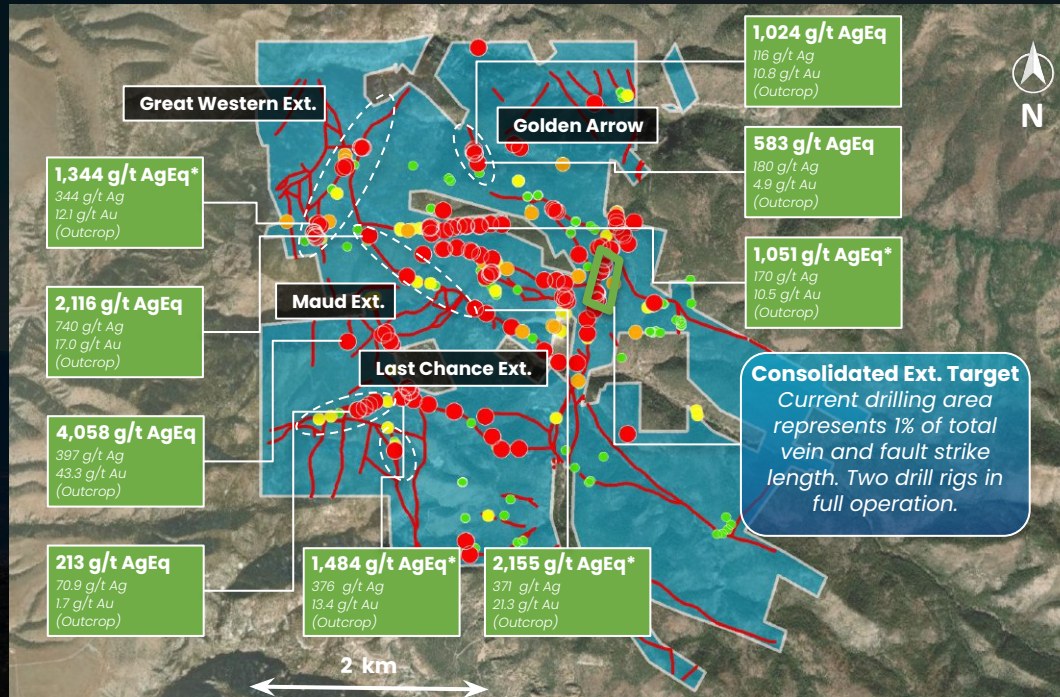


Mogollon Project Drilling and Target Areas



SilverCrest Metals Inc



LEGEND

- Mogollon Claims
- Prospective faults and veins

AgEq** (g/t)

- 0 - 0.5
- 0.5 - 10
- 10 - 50
- 50 - 100
- 100 - 2,450

1,344 g/t AgEq*
344 g/t Ag
121 g/t Au
(Outcrop)

2,116 g/t AgEq
740 g/t Ag
17.0 g/t Au
(Outcrop)

4,058 g/t AgEq
397 g/t Ag
43.3 g/t Au
(Outcrop)

213 g/t AgEq
70.9 g/t Ag
1.7 g/t Au
(Outcrop)

1,484 g/t AgEq*
376 g/t Ag
13.4 g/t Au
(Outcrop)

2,155 g/t AgEq*
371 g/t Ag
21.3 g/t Au
(Outcrop)

1,024 g/t AgEq
116 g/t Ag
10.8 g/t Au
(Outcrop)

583 g/t AgEq
180 g/t Ag
4.9 g/t Au
(Outcrop)

1,051 g/t AgEq*
170 g/t Ag
10.5 g/t Au
(Outcrop)

*Previously released, See January 20th, 2022 News Release

**AgEq is calculated using US\$20/oz Ag, US\$1,800/oz Au, with metallurgical recoveries of Ag - 90% and Au - 95%.
 $AgEq = (Ag\ grade \times Ag\ recovery) + ((Au\ grade \times Au\ recovery) \times (Au\ price / Ag\ price))$.

Note: Grab samples are selective in nature and the resultant assays may not be representative of all mineralization on the project

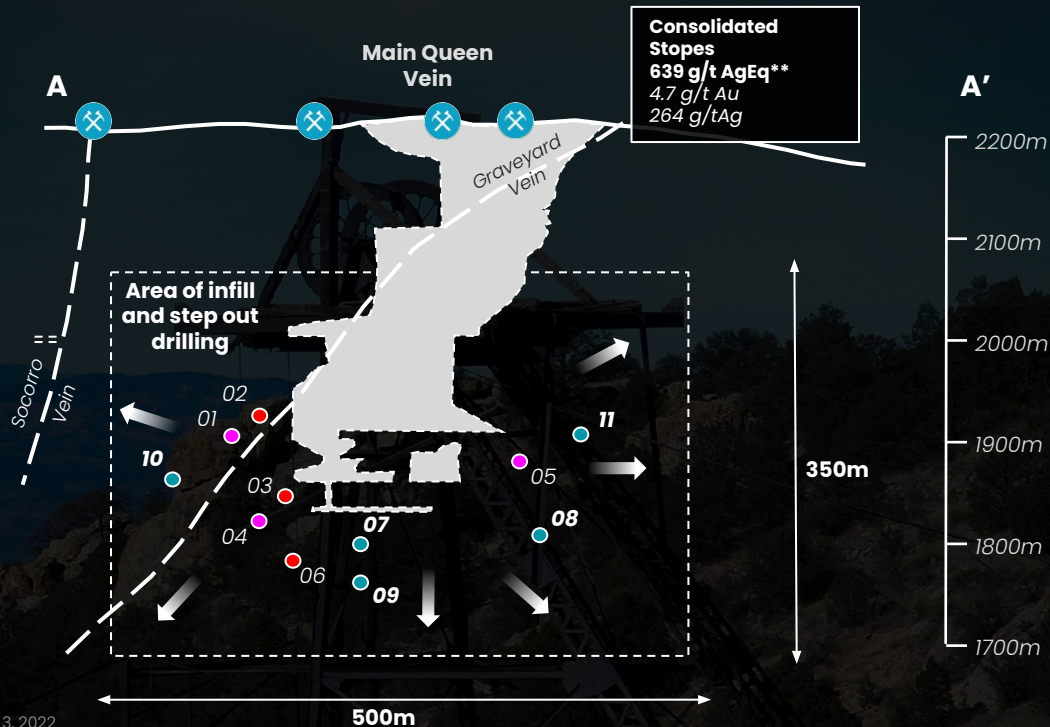
Consolidated Extension Drilling

MOG22-05*	
448	1,891
31m	Incl 1.8m
13,883 AgEq*m	

MOG22-04*	
429	1,848
11.6m	Incl 0.9m
5,089 AgEq*m	

LEGEND

- MOG22-XX — Drill Hole Pierce Point
- 448 — g/t AgEq**
- 31m — Intercept Length
- 13,883 AgEq*m — Total Grade Thickness
- Assays Pending
- >5,000 AgEq*m
- >2,500 AgEq*m



* Intervals reported in news releases dated March 3, 2022 and May 3, 2022

**AgEq is calculated using US\$20/oz Ag, US\$1,800/oz Au, with metallurgical recoveries of Ag = 90% and Au = 95%. AgEq = (Ag grade x Ag recovery) + ((Au grade x Au recovery) x (Au price / Ag price))

True thicknesses are estimated to be 70-80% of drilled intercept length. Historic Production Source: Blackhawk Mines corporate production records 1942