
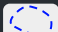
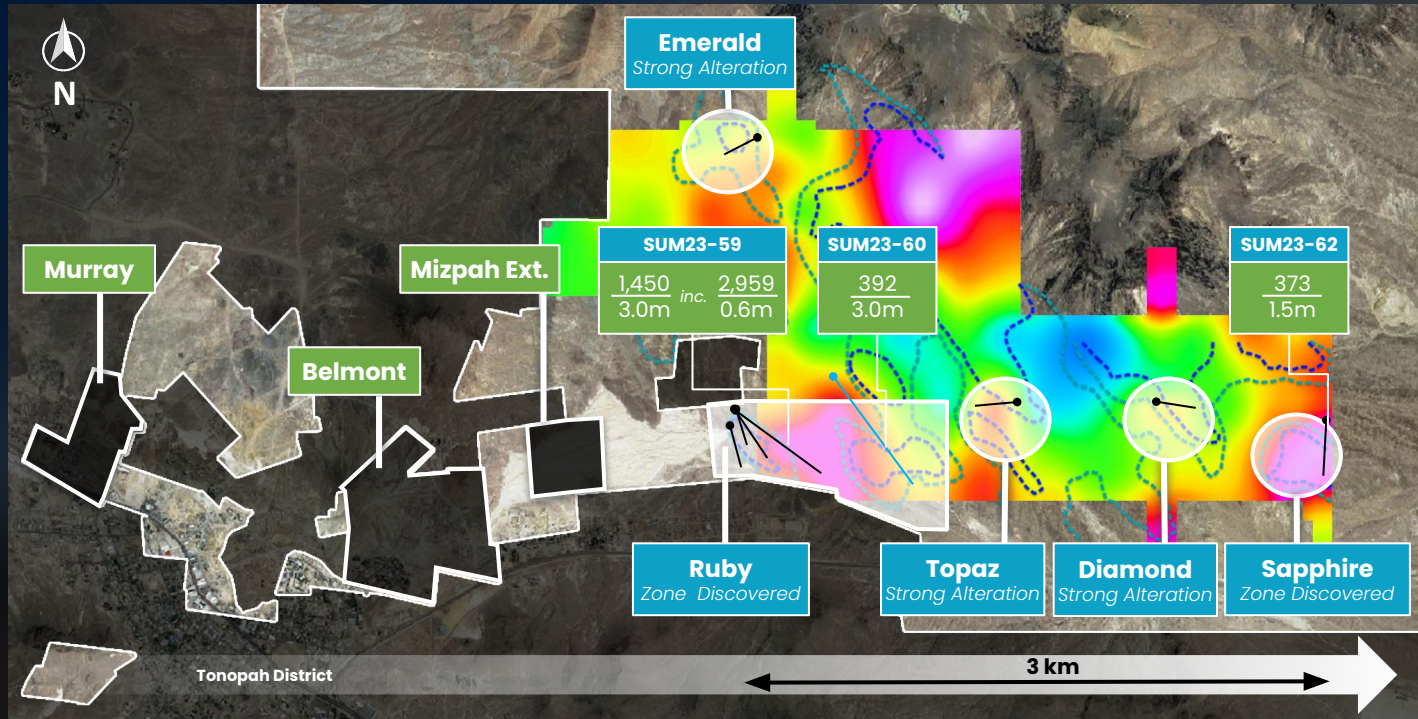


Hughes Project 2023 Drilling Summary

LEGEND

- Target areas**
-  Previously Drilled & Mineralized
 -  Newly Reported Assays

- Arsenic in soil**
-  Anomalous
 -  Highly Anomalous



Hughes Project Long Section

Legend

Drill Hole Pierce Point

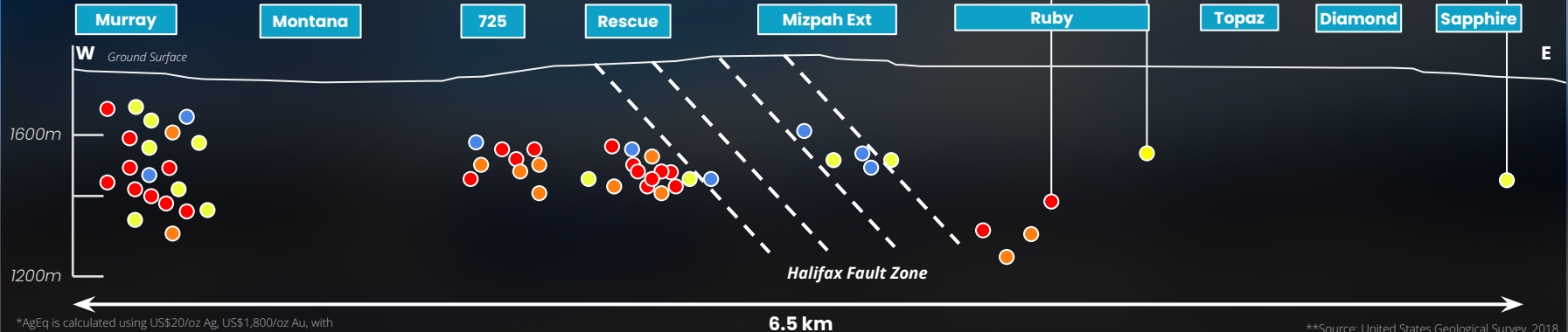
- >1,000 AgEq*
- >500 AgEq*
- >150 AgEq*
- <150 AgEq*

1,450 g/t AgEq*
3.0m Intercept Length

Historic Tonopah Mining District
175M oz Ag, 1.86M oz Au
679 g/t Ag, 7.3 g/t Au**

Eastern Extension
Open and Unexplored

SUM23-59	SUM23-60	SUM23-62
$\frac{1,450}{3.0m} \text{ inc. } \frac{2,959}{0.6m}$	$\frac{392}{3.0m}$	$\frac{373}{1.5m}$



*AgEq is calculated using US\$20/oz Ag, US\$1,800/oz Au, with metallurgical recoveries of Ag - 90% and Au - 95%. AgEq = (Ag grade x Ag recovery) + ((Au grade x Au recovery) x (Au price / Ag price)).

**Source: United States Geological Survey, 2018
Figure is schematic and pierce point locations are approximate
Looking North